

# Opening / *A New Way of Seeing*

## DUNCAN SPRATTMORAN: *The Practice of Landscapes*

When Duncan Sprattmoran was twenty-two, he was visiting Findhorne, the spiritual community in Scotland, at what he describes as the end of a long and turbulent crisis. Seriously ill, he had a series of dreams, one of which found him in an apple tree painting watercolors. When he awoke, he walked to the village and bought some paints and set out to paint his own recovery. Says, Sprattmoran, “Over the years I began to learn how to paint. Let me mush in color and I’m a happy guy. Even gray. There’s tons of color in gray!”

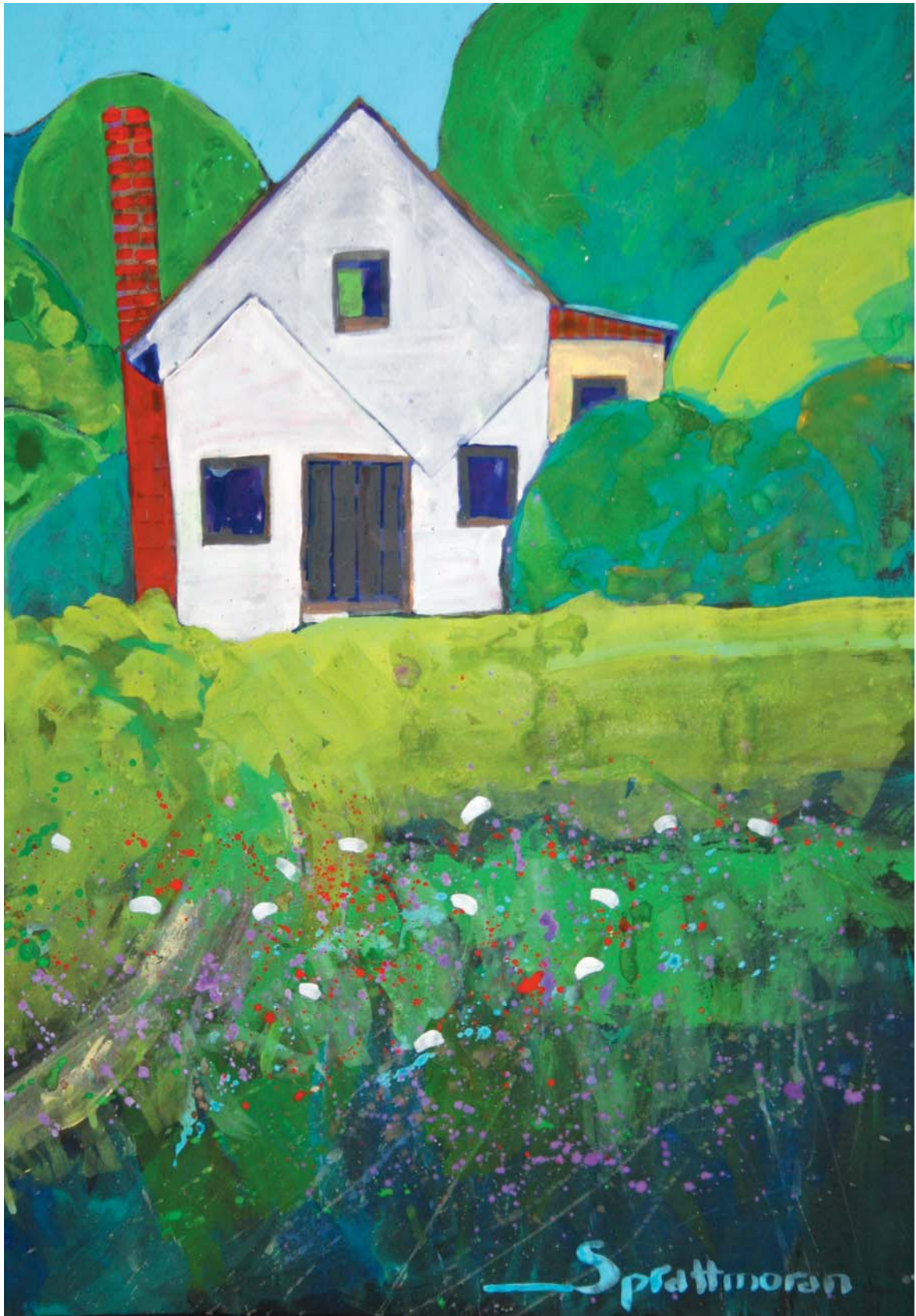
Sprattmoran now lives “in a field, in a 12-volt, off-the-grid, solar and windmill-powered house on Michigan’s Leelanau Peninsula, the top knuckle of the little finger.” He says, “I’m a middle school teacher, and I paint almost daily and almost always outside. A short walk behind my house, there are four islands, high sand dunes — vistas everywhere! Standing within a landscape and painting a landscape speaks to my own condition. The landscape reminds me that I am part of it.”

—STEPHEN KIESLING



**The Passage** / 2008  
acrylic on board, 24 x 48 in.

**OPENING CELEBRATION** Join Duncan Sprattmoran and the *Spirituality & Health* gang in Traverse City, Michigan, on Friday, June 26, from 6 to 9 p.m. at the former State Hospital, now the home of Gallery Fifty. For directions go to [GalleryFifty.com](http://GalleryFifty.com).



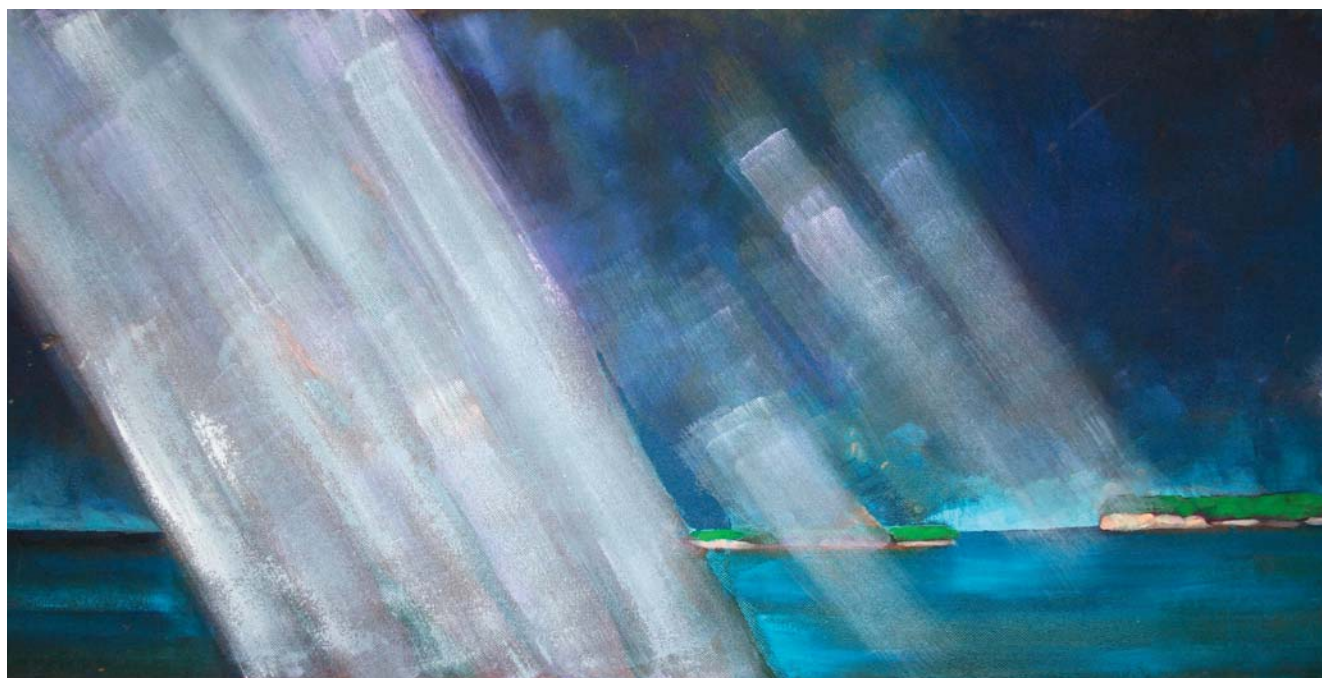
Safe House / 2008  
casien on paper, 22 x 30 in.



**Even the Horizon  
is Curved** / 2008  
guache on paper, 22 x 30 in.



**Marsh Grass** / 2006  
acrylic on paper, 22 x 30 in.



**Squall** / 2007  
acrylic on board, 24 x 48 in.



Queen Anne's Lace / 2005  
watercolor on paper, 22 x 30 in.